

EID moto jacket

Front

Cut 1 outer



Pattern by Lomi
lthilear.com

For personal
use only

1 cm

1 inch

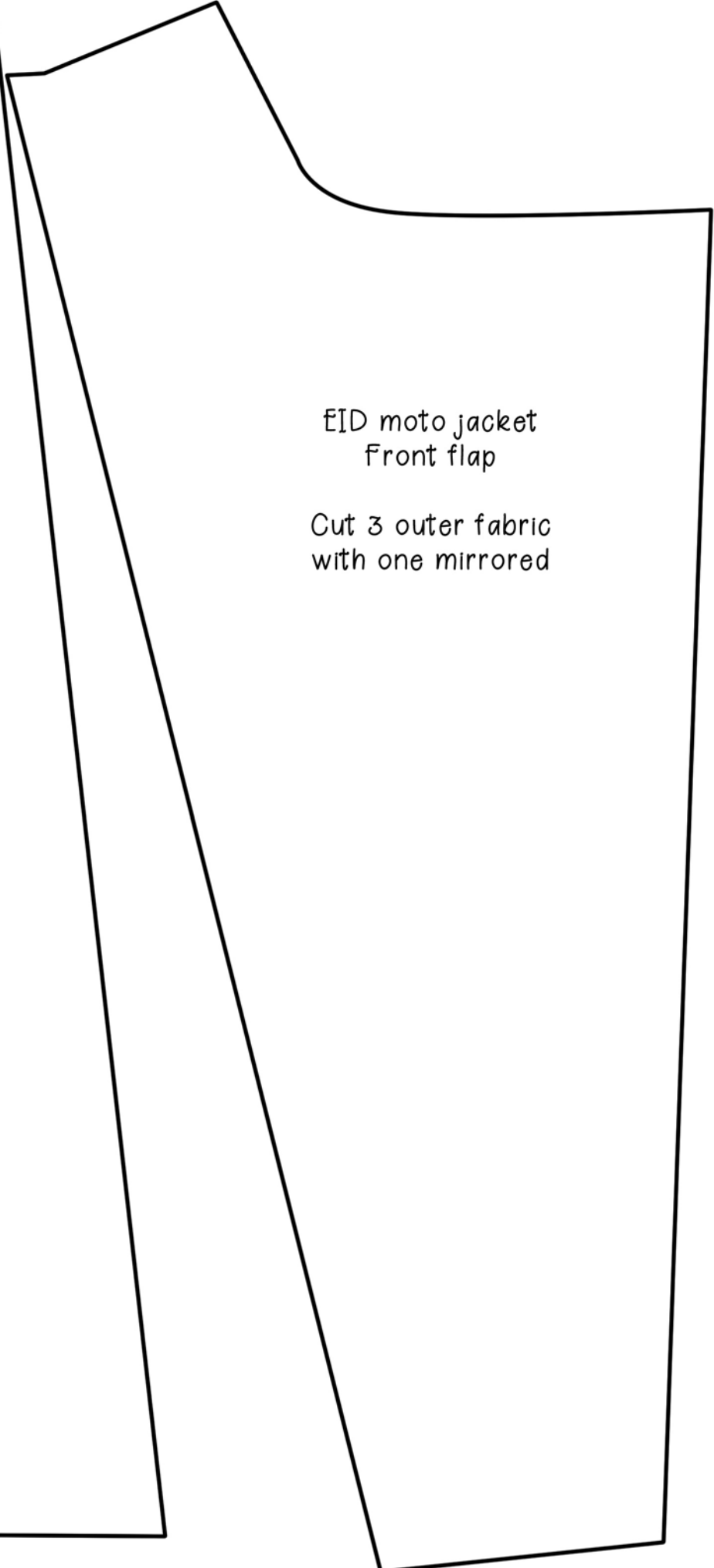


trace slit onto front
do not cut



EID moto jacket
Front side
Cut 1 outer,
2 lining

trace slit onto front
do not cut

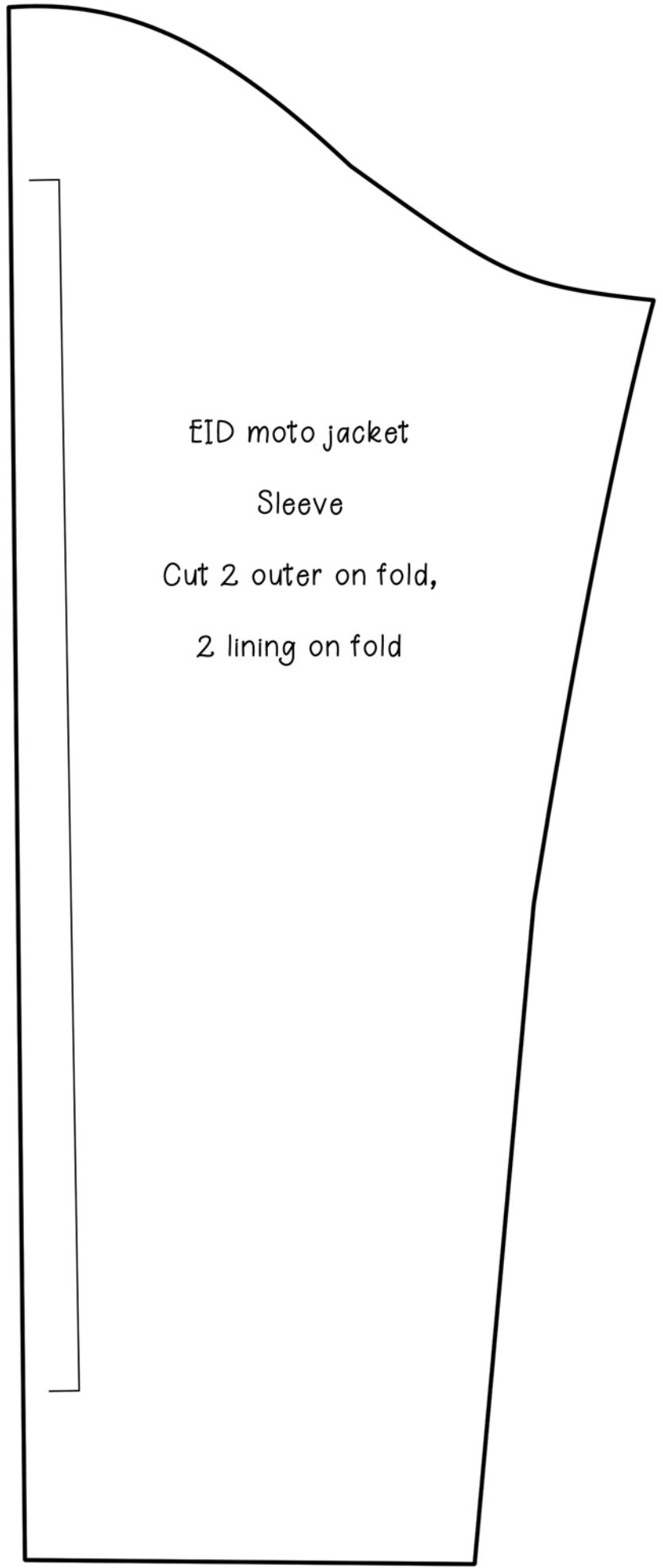


EID moto jacket
Front flap

Cut 3 outer fabric
with one mirrored



EID moto jacket
Collar
Cut 2 outer



EID moto jacket
Sleeve
Cut 2 outer on fold,
2 lining on fold

