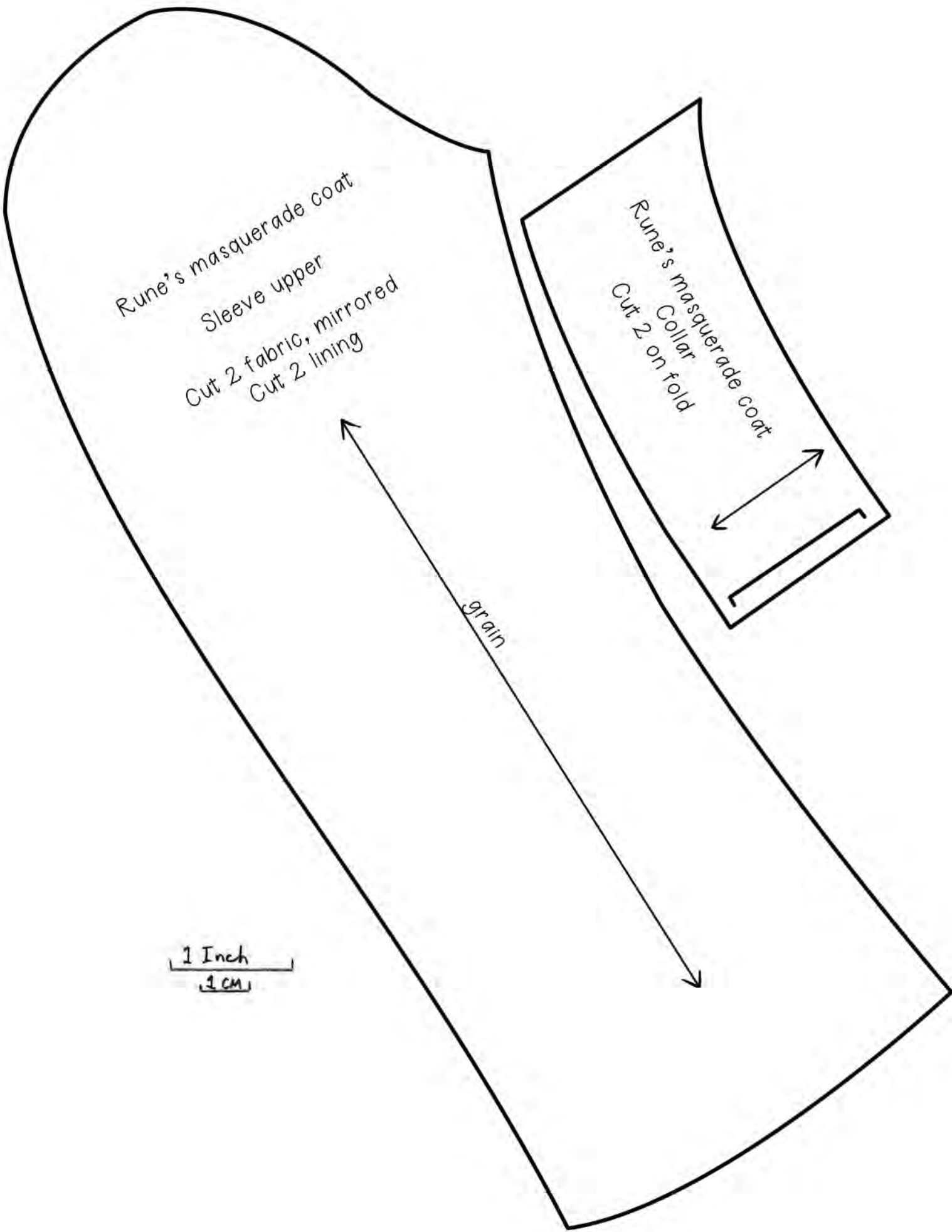


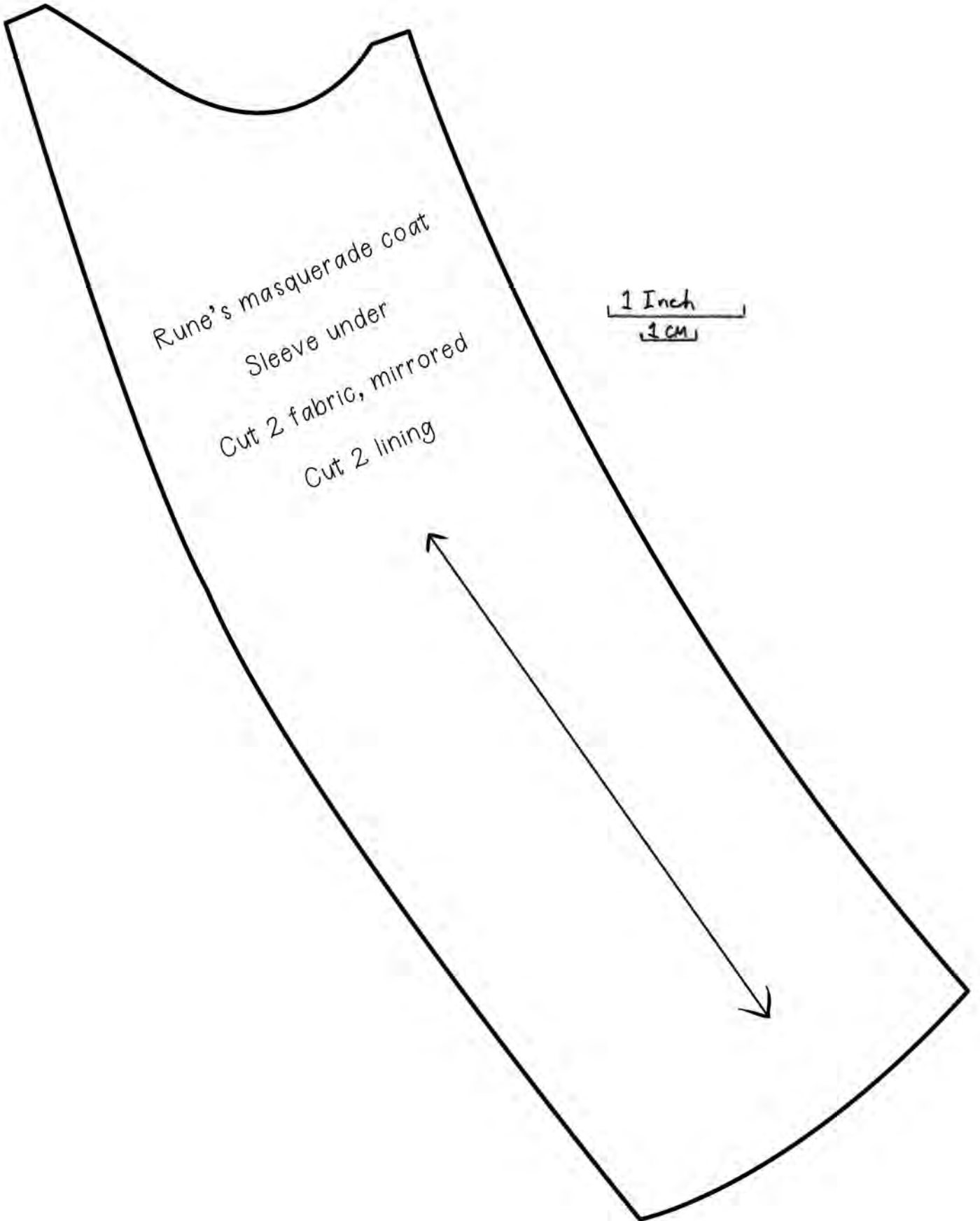
Rune's masquerade coat
Sleeve upper
Cut 2 fabric, mirrored
Cut 2 lining

Rune's masquerade coat
Collar
Cut 2 on fold

grain

1 Inch
1 cm





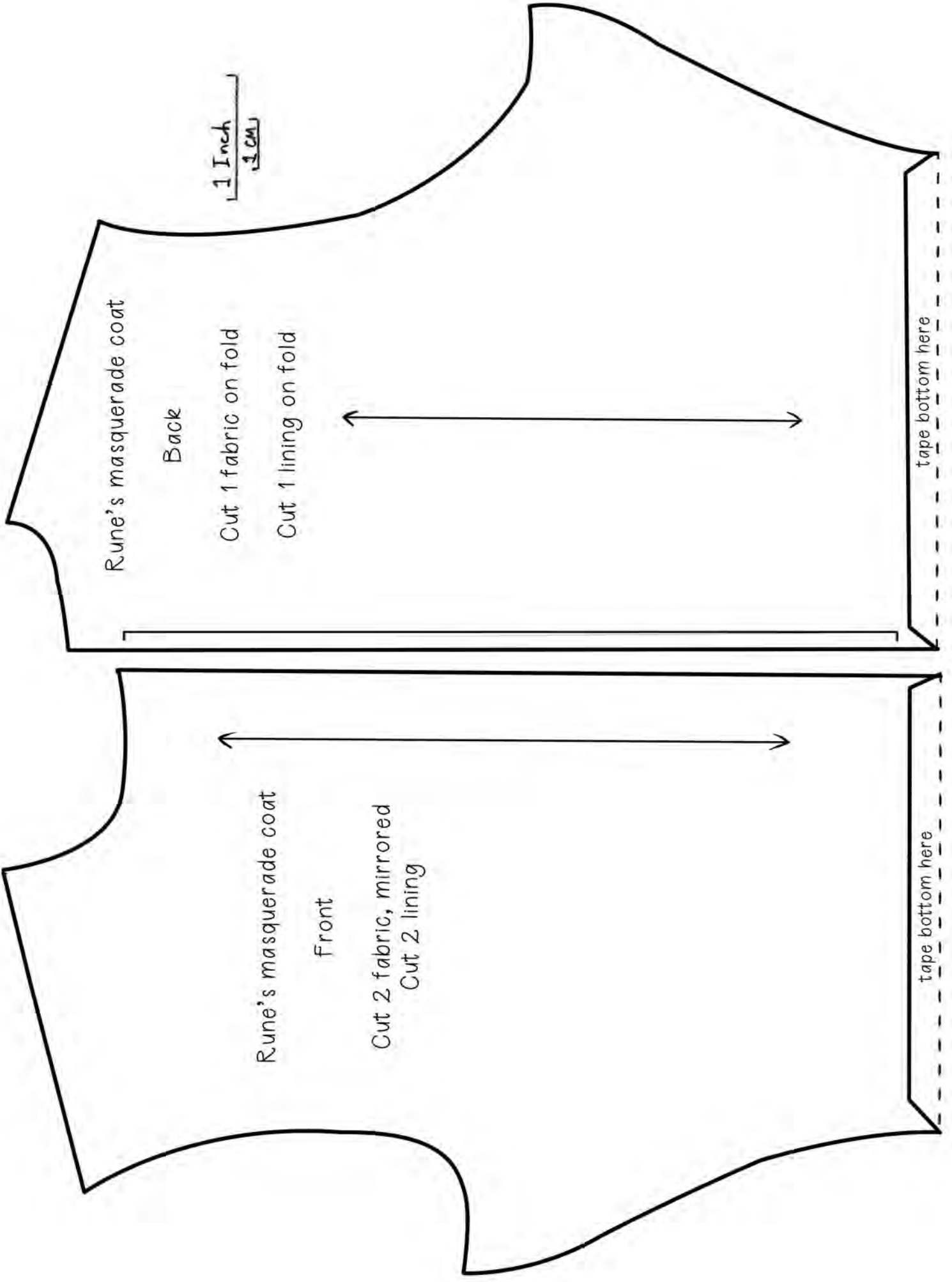
Rune's masquerade coat

Sleeve under

Cut 2 fabric, mirrored

Cut 2 lining

1 Inch
2.54 cm



Rune's masquerade coat

Back

Cut 1 fabric on fold

Cut 1 lining on fold

1 Inch
2.5 CM

tape bottom here

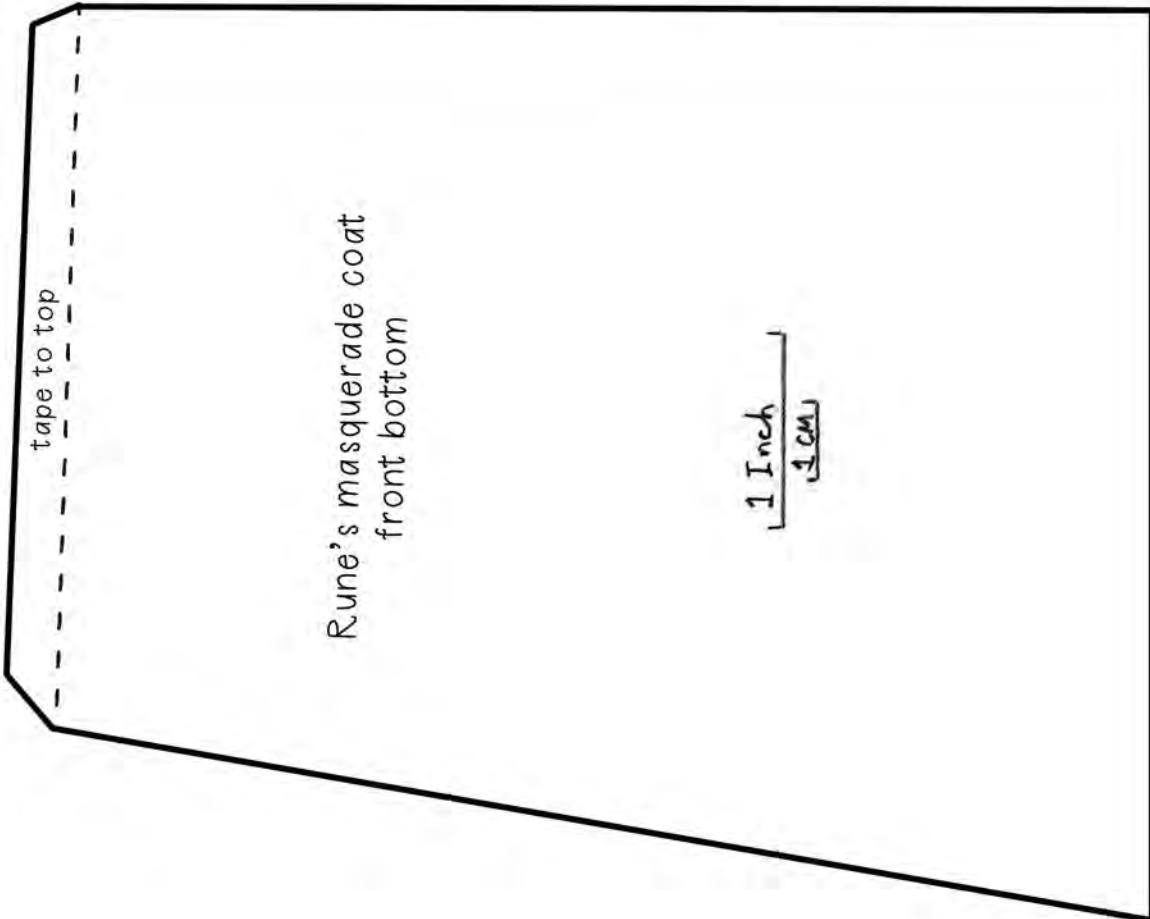
Rune's masquerade coat

Front

Cut 2 fabric, mirrored

Cut 2 lining

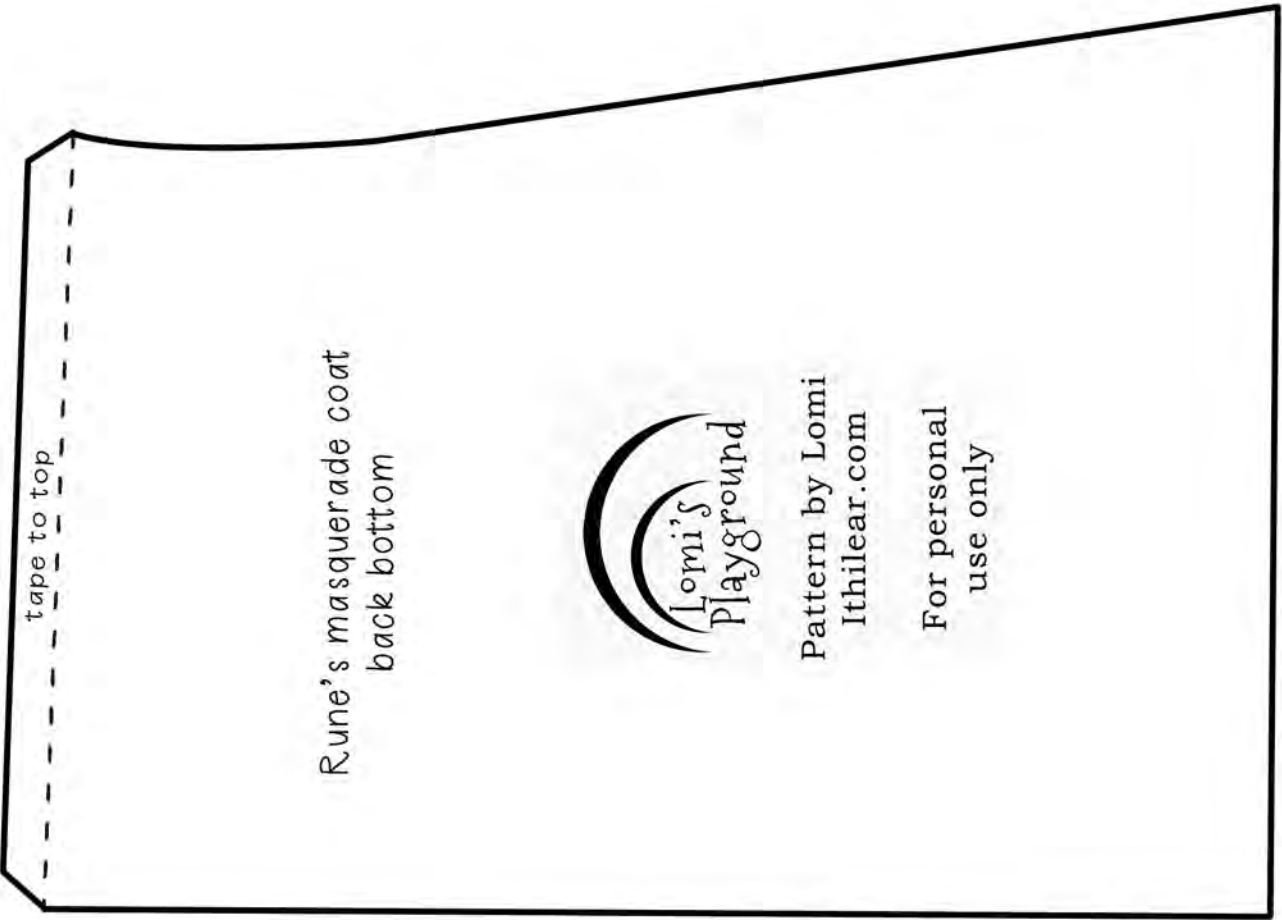
tape bottom here



tape to top

Rune's masquerade coat
front bottom

1 Inch
2.54 cm



tape to top

Rune's masquerade coat
back bottom



Pattern by Lomi
Ithilear.com

For personal
use only