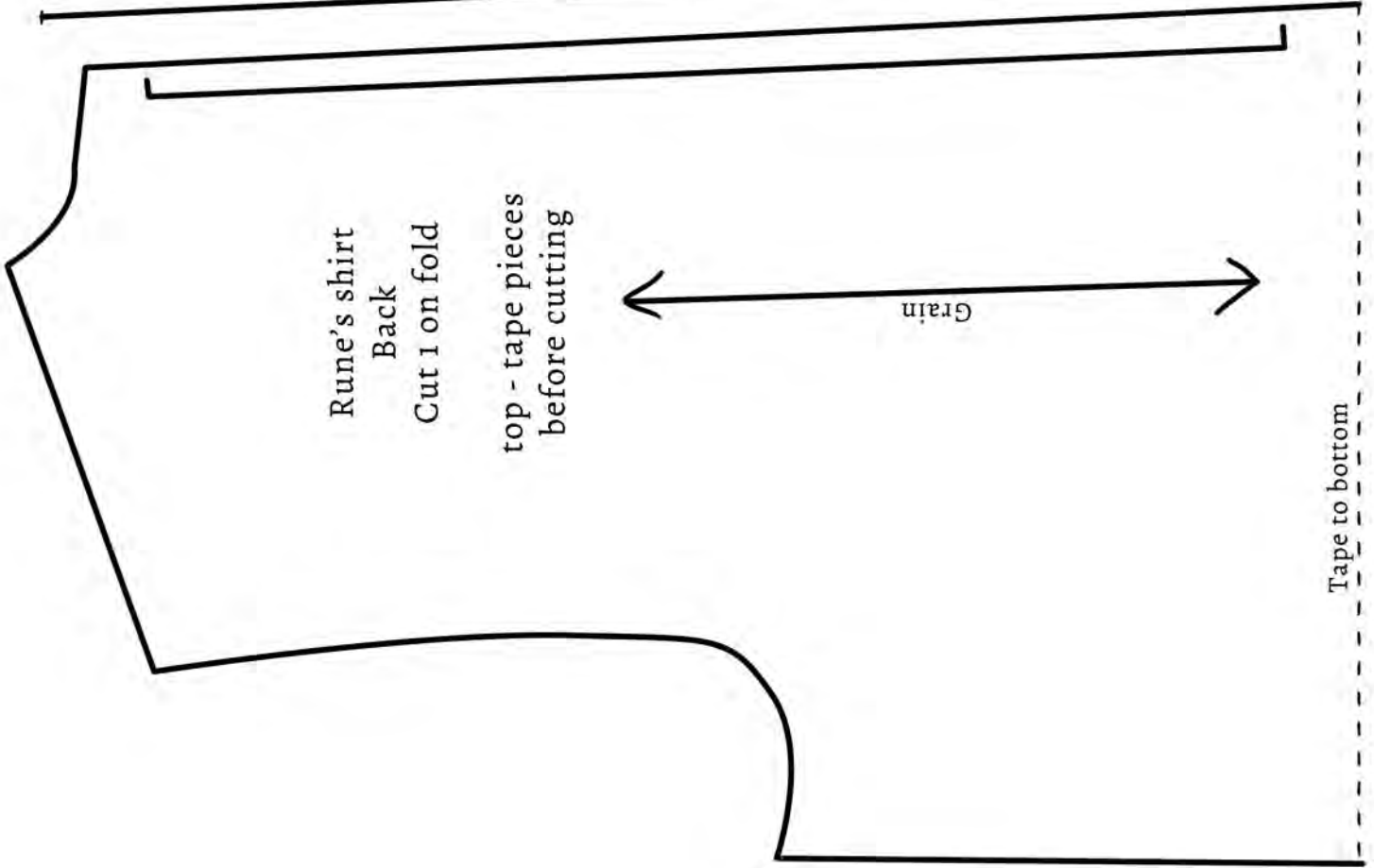


1 Inch
1 CM

Rune's shirt
Front
Cut 2
Top - tape
pieces before
cutting

Grain

Tape to bottom



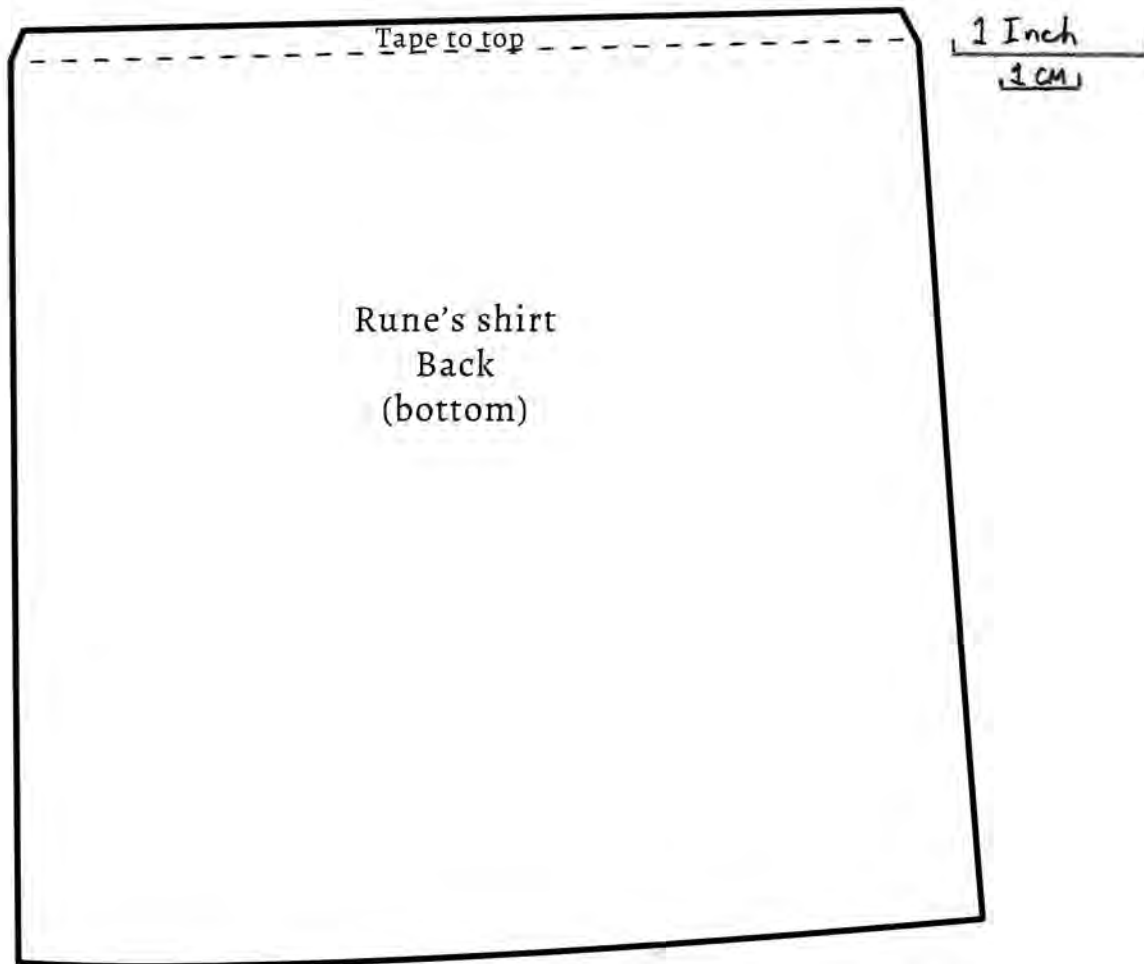
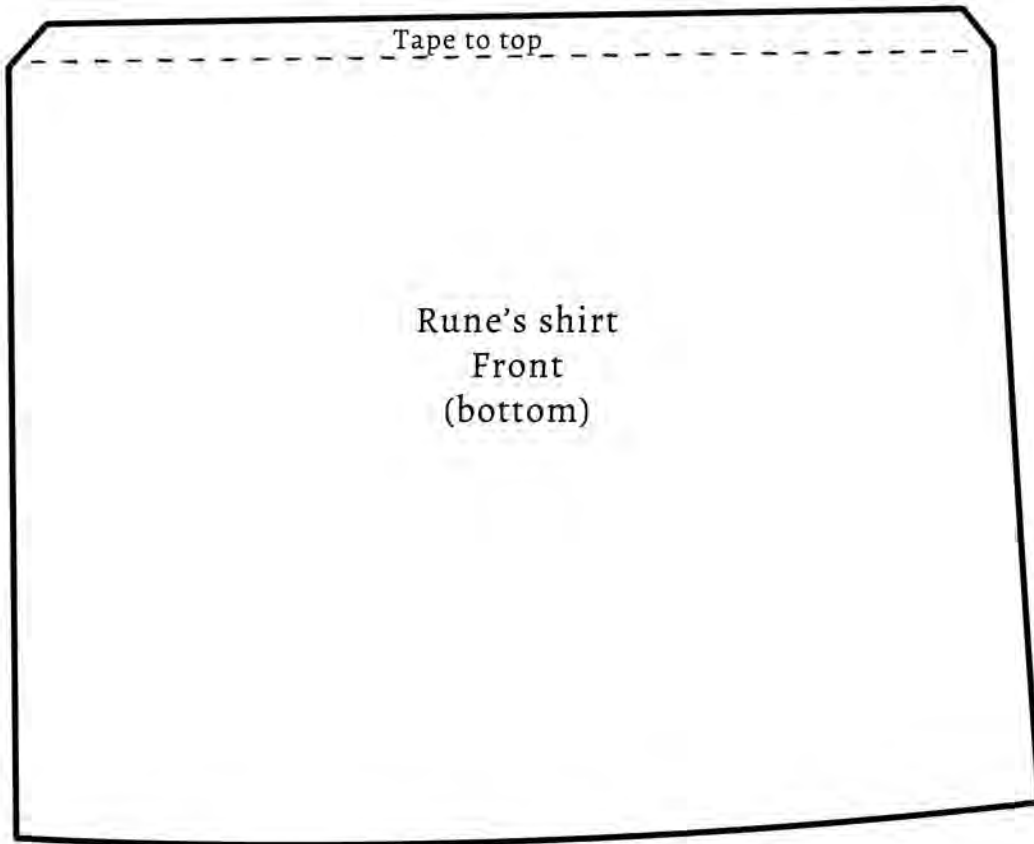
Rune's shirt
Back
Cut 1 on fold
top - tape pieces
before cutting

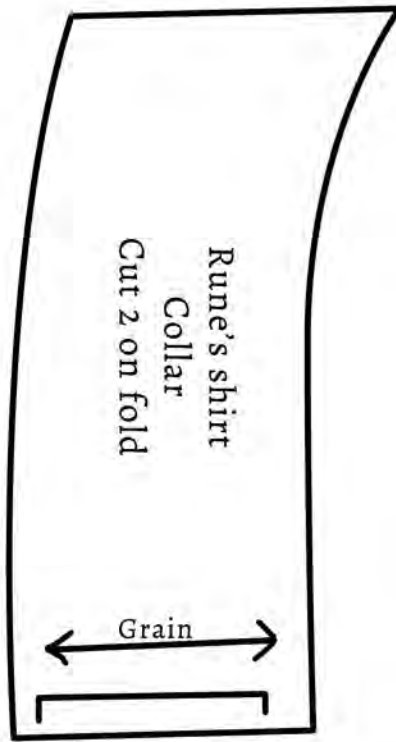
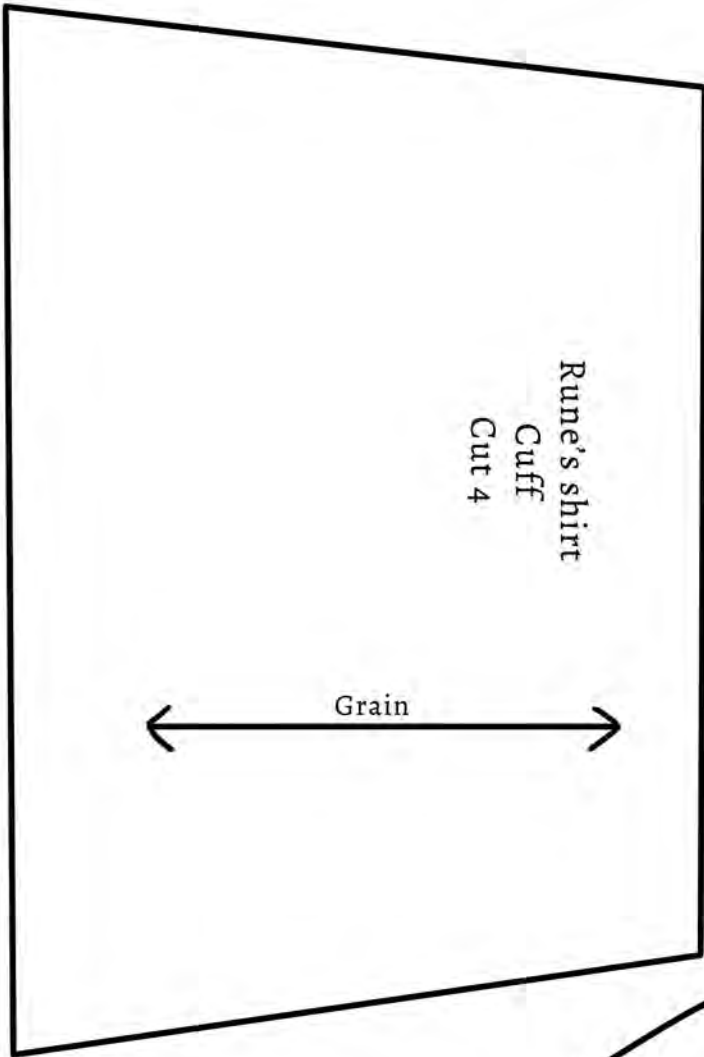
Grain

Tape to bottom

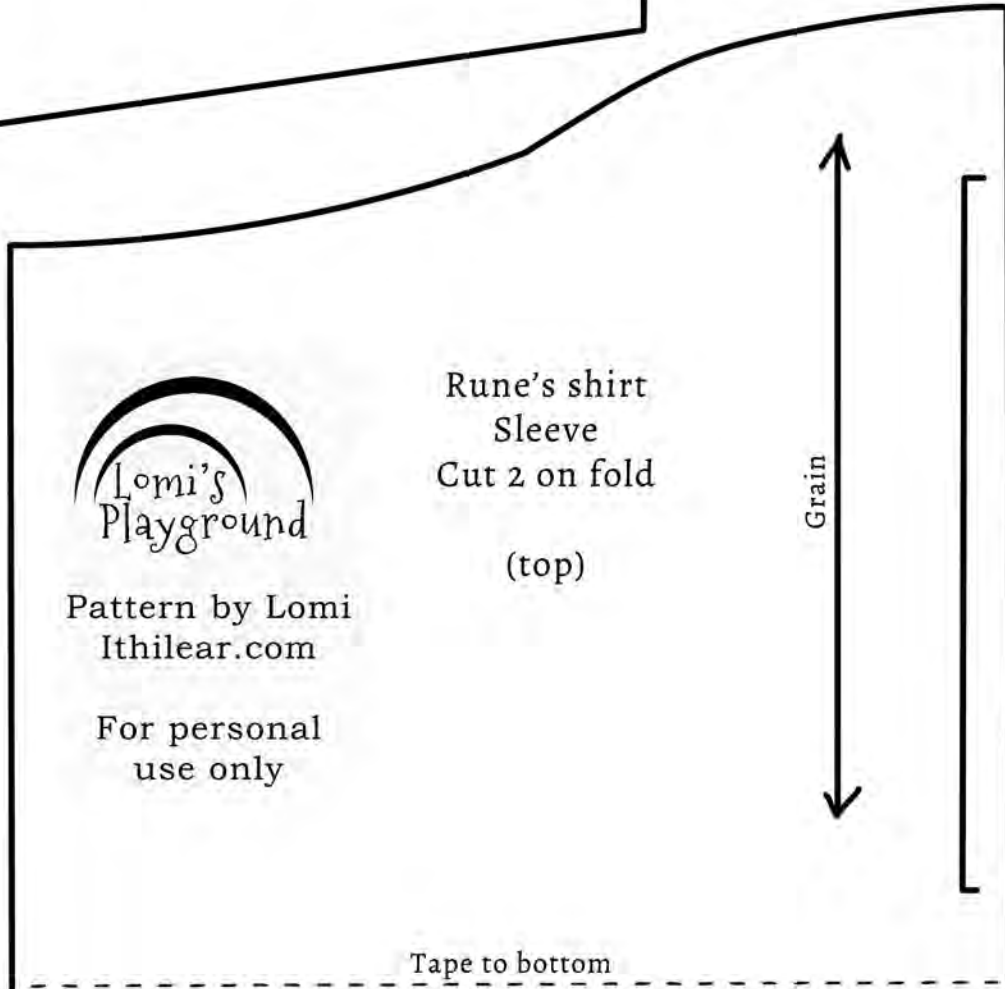
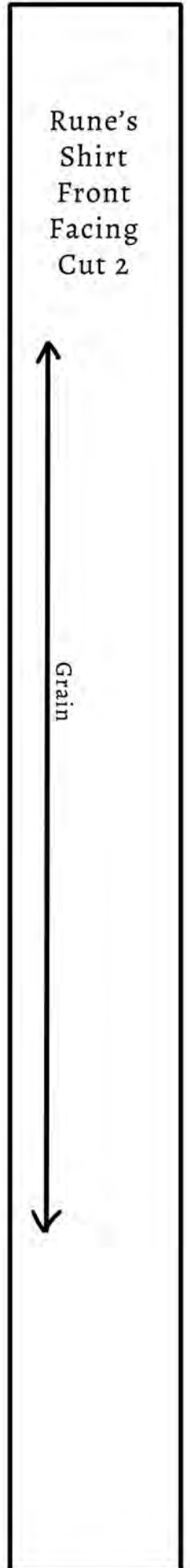


Pattern by Lomi
Ithlear.com
For personal
use only





1 Inch
1 CM



Pattern by Lomi
Ithilear.com

For personal
use only

