

Rune's pants  
Fall front waistband  
Cut 1 contrast

Rune's pants  
Thigh patch  
back inner  
Cut 2

Side A

Side B

Rune's pants  
Back inner  
Cut 2  
contrast

Rune's  
pants  
back inner  
Cut 2  
contrast

Side A

Side B

Rune's pants  
Thigh strap - cut 2

1 inch

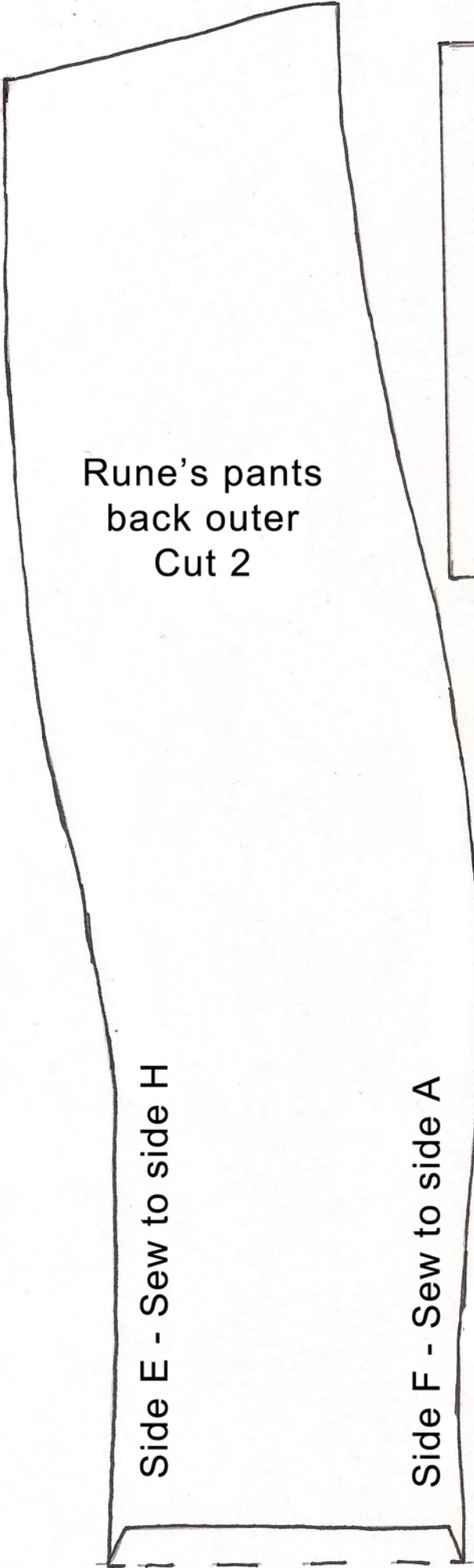
Side A - Sew to side F

Side B - Sew to side C



Pattern by Lomi  
Ithilear.com

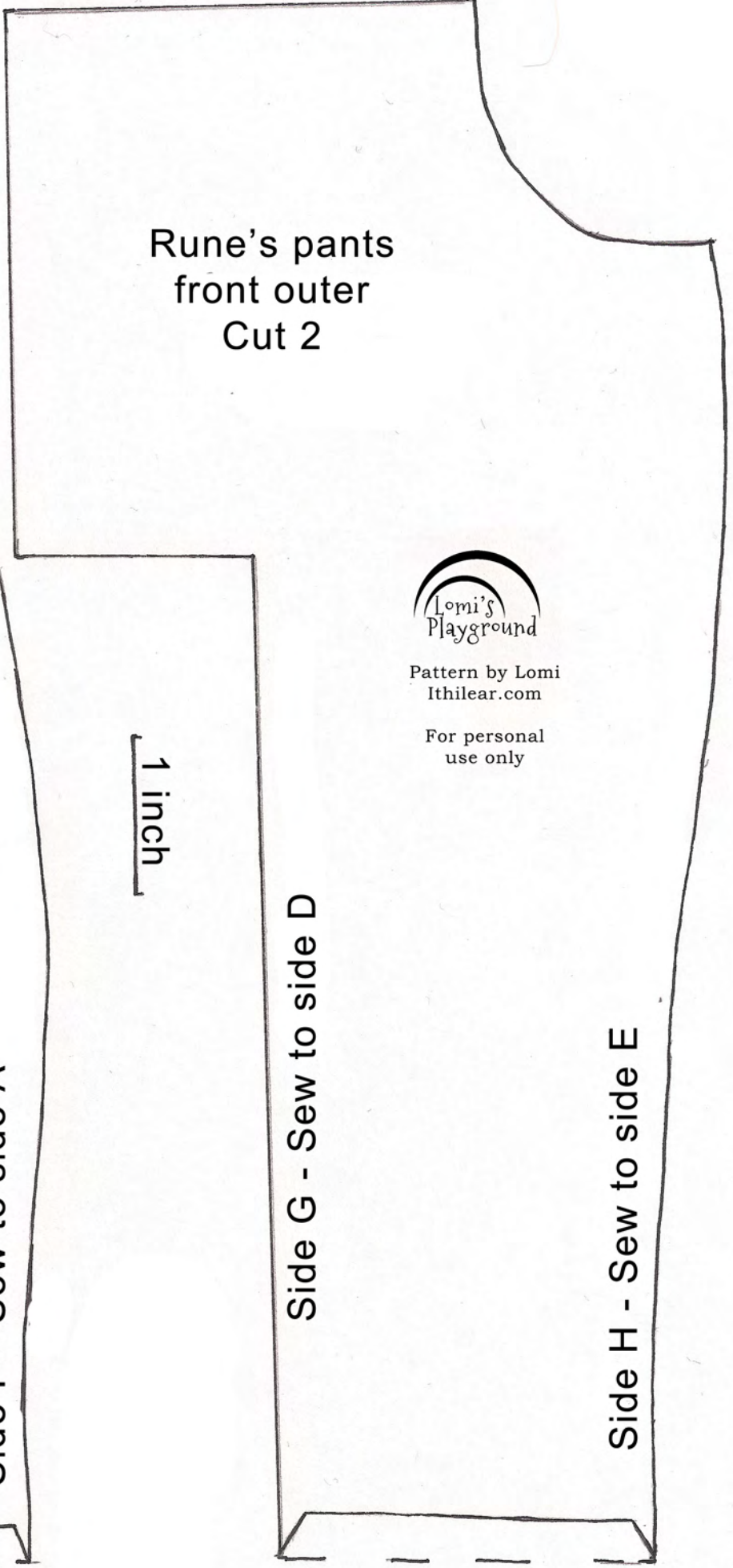
For personal  
use only



Rune's pants  
back outer  
Cut 2

Side E - Sew to side H

Side F - Sew to side A



Rune's pants  
front outer  
Cut 2

1 inch

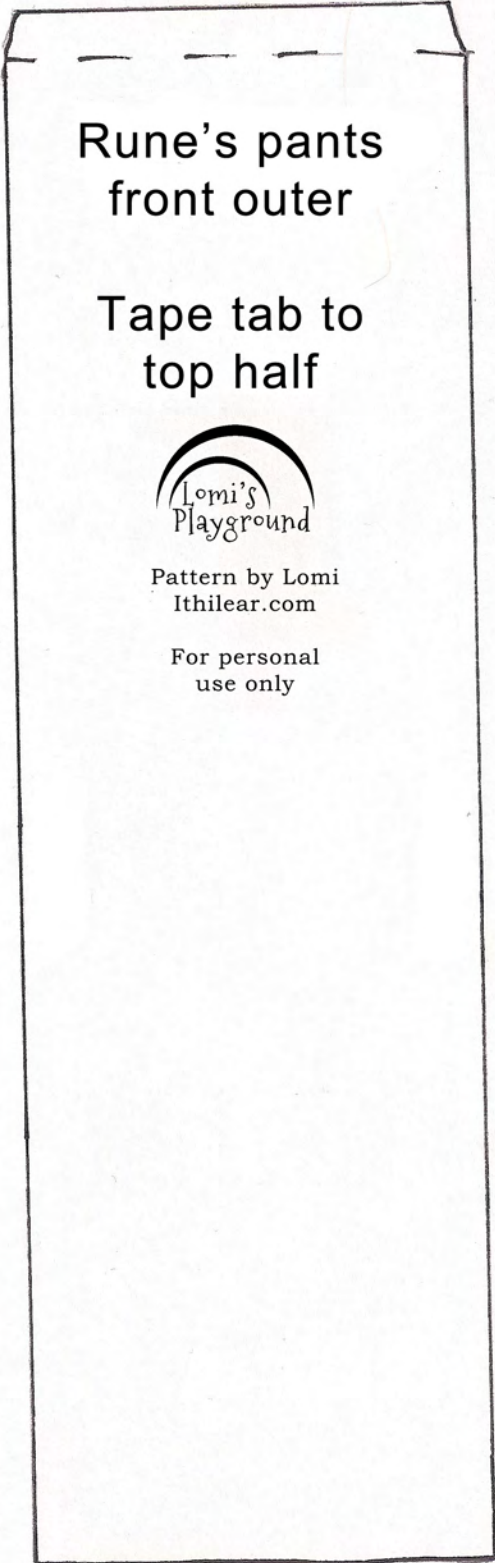
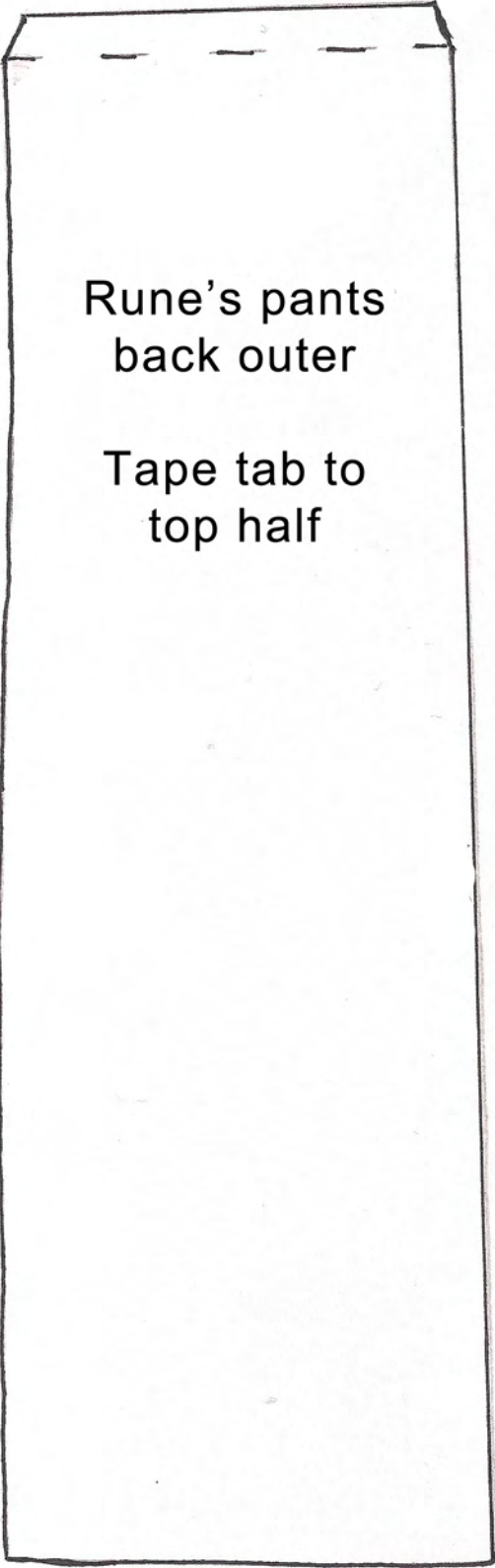
Side G - Sew to side D

Side H - Sew to side E



Pattern by Lomi  
lthilear.com

For personal  
use only



1 inch

A vertical dimension line with the text "1 inch" written vertically next to it, indicating the height of the pattern pieces.



Pattern by Lomi  
Ithilear.com

For personal  
use only

Rune's pants  
waistband side  
Cut 2

1 inch

Rune's pants  
Fall front  
lining  
Cut 2 contrast

Rune's pants  
Waistband back  
Cut 1 contrast

Belt loop  
Cut 5