

1 Inch  
2 CM

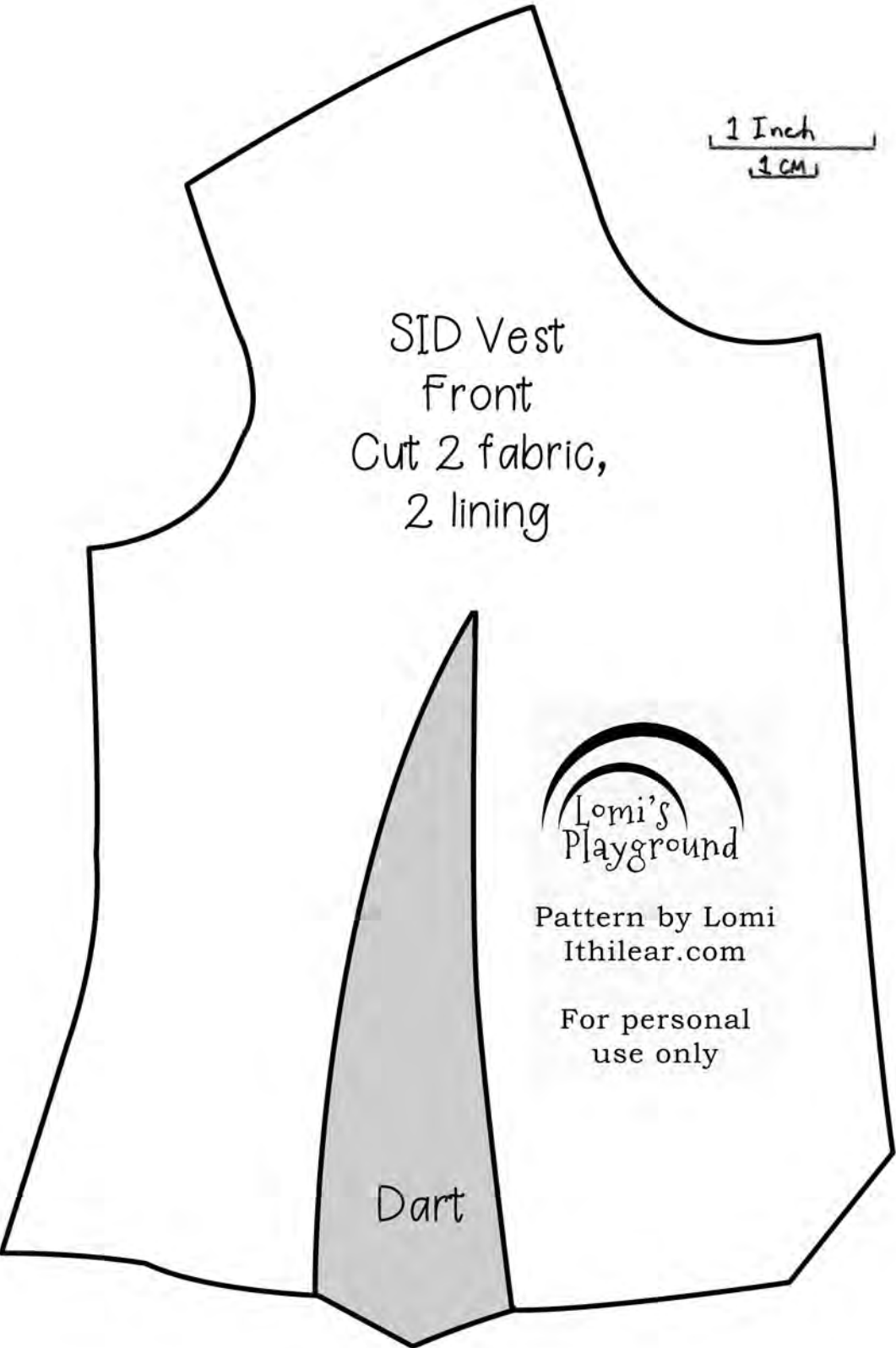
SID Vest  
Front  
Cut 2 fabric,  
2 lining



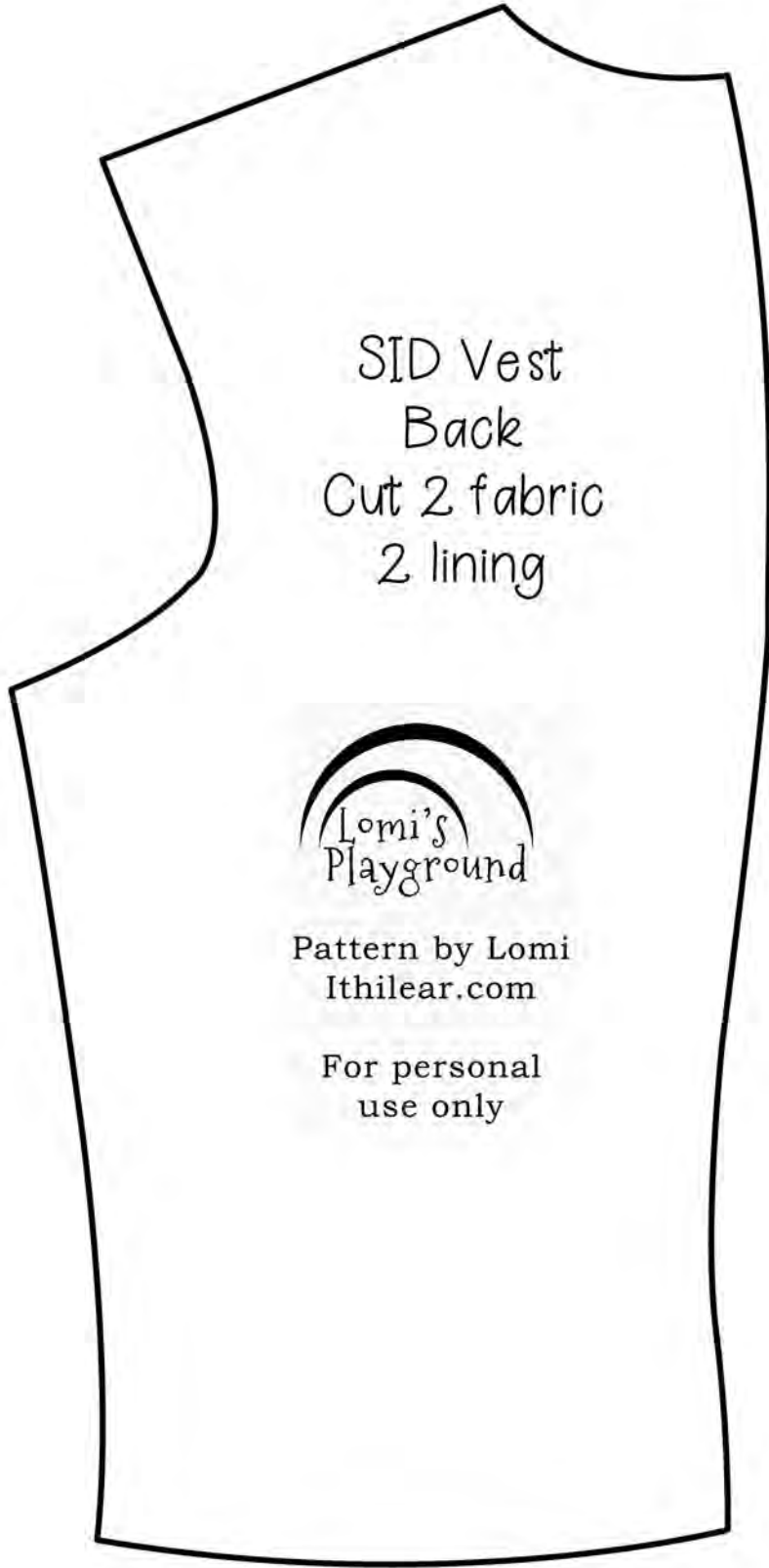
Pattern by Lomi  
Ithilear.com

For personal  
use only

Dart



1 Inch  
2.5 cm



SID Vest  
Back  
Cut 2 fabric  
2 lining



Pattern by Lomi  
Ithilear.com

For personal  
use only

SID Vest  
Pocket lining  
Cut 2 on fold

SID Vest  
Pocket welt  
Cut 2 welt, 2 facing

SID Vest  
Back straps  
Cut 2