

*Pick square or
rounded sleeve*

nYID Yukata
Sleeve

cut 2 on fold

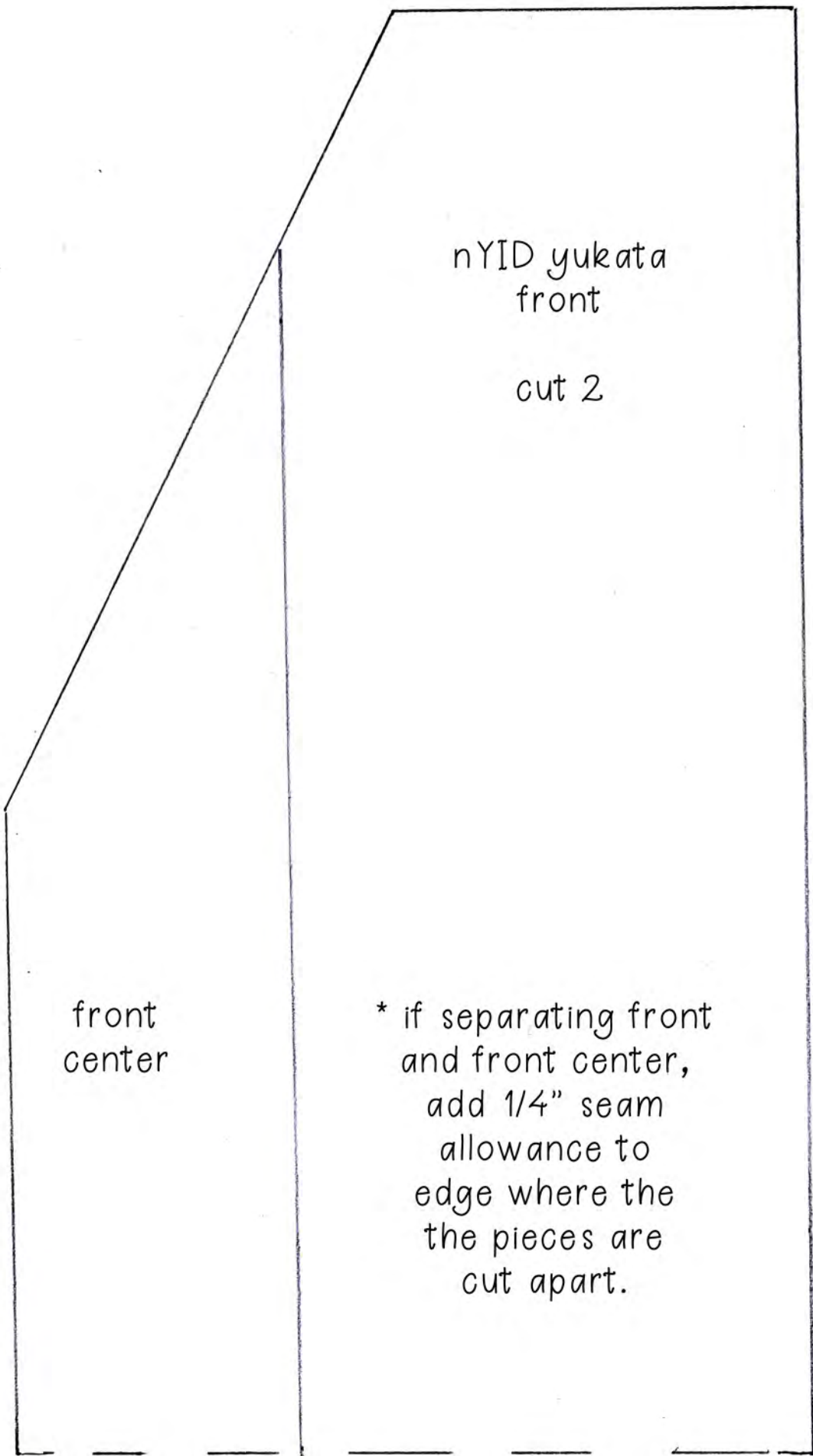


front
center

front

front
center

front

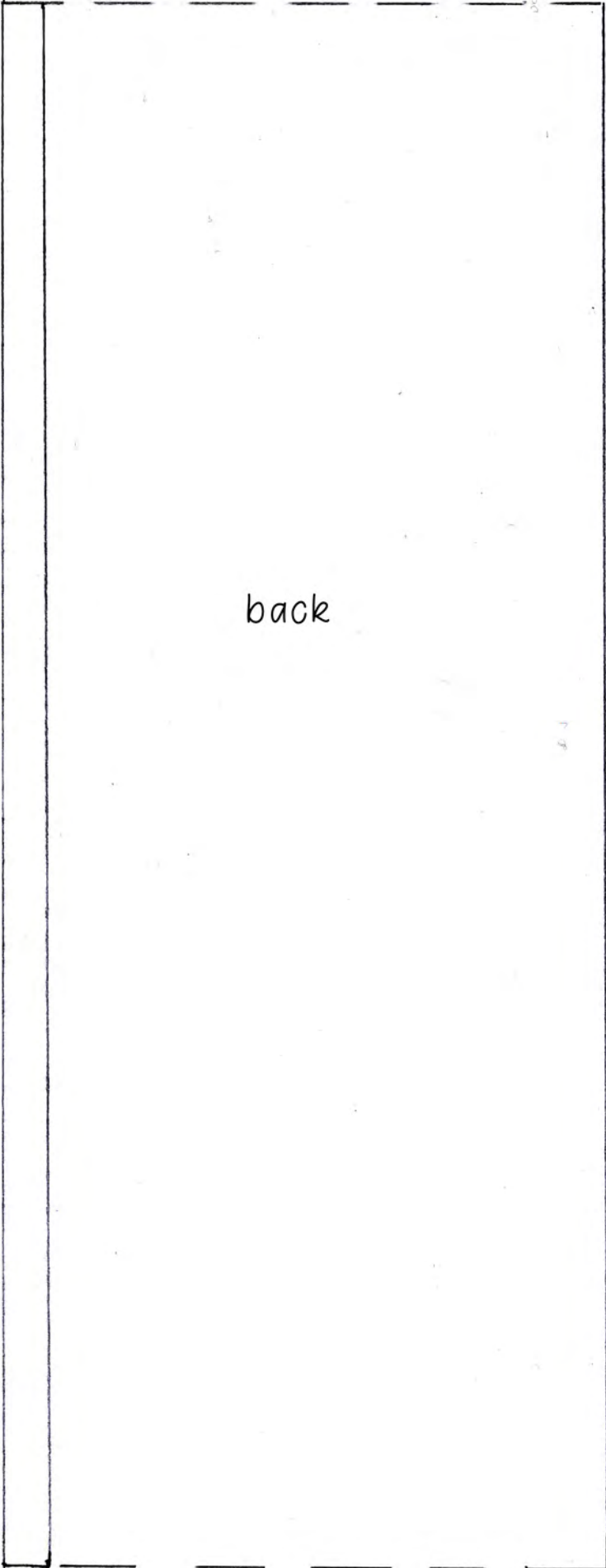


nYID yukata
front

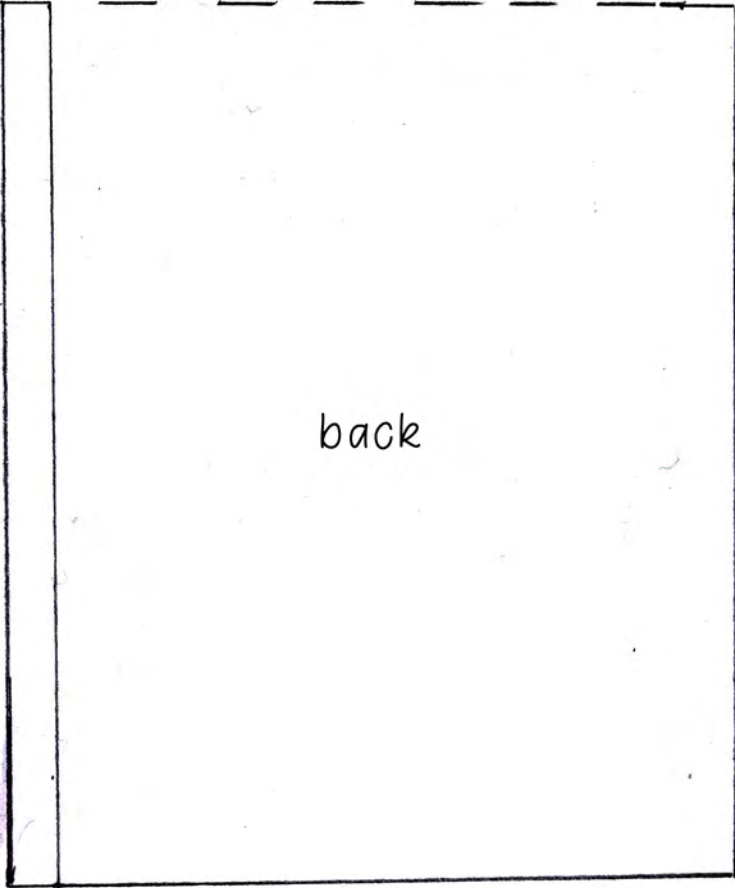
cut 2

front
center

* if separating front
and front center,
add 1/4" seam
allowance to
edge where the
the pieces are
cut apart.



back



back

nYID yukata
back

cut 2

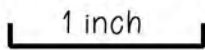
OR

cut 1 on fold



Pattern by Lomi
Ithilear.com

For personal
use only



cut this line if cutting 1 on fold

cut this line if cutting 2 and sewing together

nYID
yukata
collar

cut 2